

JOHNSON-DAVIS  
INC.



# Pipeline Connection

WINTER 2012 / SPRING 2013

## INSIDE THIS ISSUE:

Project News: Town of Palm Beach	2-3
Project News: Solid Waste Authority	4-5
Kudos Korner	6
In the Press	6
Employee Spotlight	7
Save the Date: Employee Picnic	7
In Memoriam	7
Benefits & Wellness	8-9
Safety Musings	10
Construction Career Days	10
2013 Holiday & Vacation Schedule	11
Current & Upcoming Projects	11
Project Snapshots	12

## Construct with Confidence

I am proud to introduce our company tagline, "Construct with Confidence". It was recently created by an enthusiastic, hardworking committee made up of a cross-section of our workforce.

I am impressed with "Construct with Confidence". As I repeat the phrase I realize its relevance for our customers, owners, subcontractors, suppliers, employees, and even our families.

As a customer or project owner I understand how important confidence in the partnership with Johnson-Davis Inc. is for the mutual success of our projects. As a subcontractor or supplier the confidence of prompt payment surely is important. As an employee, I have confidence and pride in my ability to contribute to the quality workmanship for which

Johnson-Davis is known. Finally, our families have confidence that we will return home safely each day from a drug-free and safety conscious workplace, and that we receive good pay and benefits to care for our families.

As president, I have confidence in all our abilities to construct a quality product in a competitive market without compromising relationships, safety, or jobsite appearance. Most of all, I am confident we work for a second generation family business that is committed to the future.

It is the Christmas season, and I hope the holidays will be enjoyable for all. We have all earned some time off to spend with our loved ones.

Scott Johnson  
President



**Riviera Beach Marina:**  
Chesca Ceance's crew preparing to tie 8 inch gravity sewer into lift stations for the City of Riviera Beach.



**St Lucie County Shinn Road Emergency Repair:** David Reid's crew placing 84 inch RCP. Work commenced two days after the project was bid and awarded. The area had to be open to emergency traffic within five days and completed within five more days. Four crews worked 12 hour shifts through the night to successfully meet this deadline.

Celebrating Over 35  
Years in Business



# Project Spotlight: Town of Palm Beach Force Main Replacement

By: Walter Pfaffenberger

Wow! The island of Palm Beach sets the standard for excellence. The town, a southern jewel, continues to update infrastructure while maintaining the highest level of craftsmanship. From a contractor's perspective, it's a privilege to be working alongside Jim Bowser, Jeffery Sanon, Doug Terry, and the Public Works Department as well as the engineers and inspectors from Mathews Consulting.

Under the Accelerated Capital Improvement Program, the Town of Palm Beach awarded Burkhardt Construction Inc. and Johnson-Davis Inc. a contract to replace force main, drainage, and roadway infrastructure due to its observed level of deterioration. The Town set forth a highly aggressive schedule

looking for Johnson-Davis to complete four miles of 18" force main and roadway in only seven months!

A major concern from the

onset was the existence of underground utilities whose location was undeter-

due to the heavy traffic flow. Not only did this require precision work

from Johnson-Davis, but from our subcontractors as well.

We worked diligently to restore the inside and outside of the tunnel. With an elevated level of performance and demand for excellence by both our employees and subcontractors, we were able to

achieve Mar-A-Lago's Beach Club standards. The subcontractors who helped Johnson-Davis make the tunnel work successful



**Jeff Brady's crew snakes new 18 inch force main over, under, and around the many conflicts in Ocean Avenue.**

mined. As you can see from some of our pictures, we had to field modify certain locations of the 18" force main under and around many utilities. This is where communication and teamwork were key in resolving conflicts in a timely manner, keeping our crews on schedule.

As we put an end to one conflict, more challenges arose. For instance, notching a slot for our 18" main through Mar-a-Lago Club's beach access tunnel beneath the roadway proved to be challenging



**Tapping sleeve and valve are pressure tested prior to performing wet tap.**

were Mosley & Son Construction, C.R. Dunn, Dunn Rite Construction, ABC Concrete Cutting, and J.W.



**Surveyor and inspector record the location of the numerous existing utility pipes in Ocean Avenue.**



**Norm Weaver's crew installs force main.**



Cheatham.

A major part of our project was working within the confinements of

our MOT. The MOT was broken down into three phases, and the second proved to be the most difficult. Dur-

ing this phase we had to install pipe under a daily lane closure, and we had to have the road paved and open for nighttime use. One can never be sure how that is going to work out, but good planning and coordination go a long way. After a few days and working some kinks out, production was right where we needed it to be.

Our next point of concern suddenly shifted from installation



to testing. Sections of our 18" force main would have to be tested under roadway traffic. This is where our crews'

expertise and solid work ethic came into play.

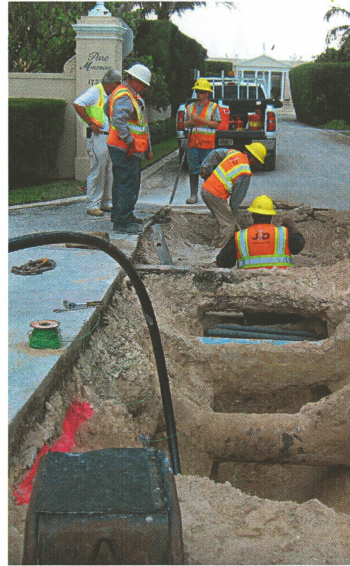
**Connections are made to new ARV manhole by Mateo Torres Mendez, Andres Pascual, and Manuel Hernandez.** After all the pipe was in the ground, restoring the areas became a

factor. Normally this is routine, but in Palm Beach it is all about the finishing touches. Lenny Arce Urieta headed this operation up which included painting barrier walls and replacing the high quality zoysia sod. Due to the attention to detail by Lenny and his crew, the restoration process went very smoothly. J.W. Cheatham did the milling and paving, and we thank their crews for their excellent work.

Superintendent Joe Bagford did a wonderful job overseeing the field crews. Joe's quick problem solving under many unique circumstances proved most useful in keeping crews moving.

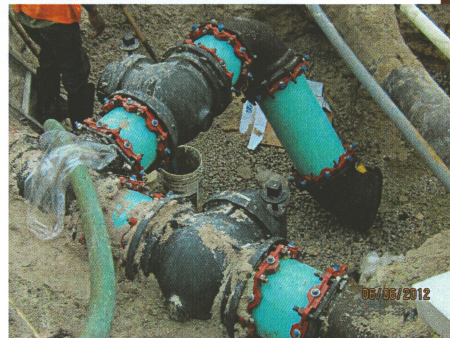
Much thanks goes to foremen and crew leaders Jeff Brady, Norm Weaver, Chesca Ceance, Lenny Arce Urieta, Dan Follett, Jerry Davis and their crews whose hard work, expertise, and leadership skills made this project a success.

As it turned out, Johnson-Davis was able to complete this infra-



**Dan Follett's crew installs service line beneath existing utilities while an inspector observes.**

structure ahead of schedule. Way to go, Johnson-Davis! This is yet another successful project thanks to superior performance from the field crews to upper management.



**Preparations are made for a tie-in.**



**The Golden Fitting: The final connection of pipe completing the new force main was painted gold.**

Owner: Town of Palm Beach

Construction Manager: Burkhardt Construction

Project Managers: Walter Pfaffenberger & Bob Hopley

Superintendent: Joe Bagford

Estimator: Thom Lardiere

Consulting Engineer: Mathews Consulting

Major Subcontractors: ABC Concrete Cutting, Tru Trucking, J.W. Cheatham, and Mosley & Son Construction



# Project Spotlight: Solid Waste Authority Renewable Energy



**Subcontractor Mosley & Son's formwork of structure S49 that incorporates twelve 30 inch pipes.**

By: Brendan Twomey

Johnson-Davis began work on the new Solid Waste Authority of Palm Beach's Renewable Energy Facility #2 in early May 2012. The Solid Waste Authority of Palm Beach County is a governmental agency responsible for providing an economical and environmentally conscious integrated solid waste management system for Palm Beach County, Florida. The

the project team is to construct the new facility swiftly and safely while keeping the existing facility active.

Hardrives Paving, Inc. was awarded a major portion of



**Pipelayer Larry Heffner and Backhoe Operator Kevin Maag taking delivery of 10x3 box culvert.**



**Renel Louisca and Erick Bagford work on installation of 10x3 box culvert.**

SWA provides solid waste disposal and recycling services and programs to the County's 1.4 million residents and businesses.

The new facility is being constructed to supplement an existing facility that currently exists just south of the new facility. A major challenge for

for the underground utilities. J-D was hired to install several different utility systems to serve the plant including domestic water, sewer, force main, fire main, de-chlorinated water main, and drainage.

The first focus for the J-D team was to address the strict criteria and guidelines laid out by the Solid Waste Authority for the project. A certain percentage of the J-D workforce was required to reside in Palm Beach County, and there were many other requirements for all field

workers throughout the project's duration.

The project also required a sizeable amount of paperwork and checklists that needed to be completed each work day. J-D Superintendent Edric Martin and lead Foreman David Faysoux worked closely with the Solid Waste Authority and their representatives to ensure J-D was in compliance as well as make sure things went smoothly.

J-D began work on the



**Larry Heffner and Renel Louisca install 24 inch RCP up to the tipping floor of the recycling building.**

**Owner:** Solid Waste Authority of Palm Beach County

**Construction Managers:** KBR & CDM Smith

**Prime Contractor:** Hardrives Paving, Inc.

**Project Managers:** Pete Oja & Brendan Twomey

**Superintendent:** Edric Martin

**Estimators:** Herb Johnson & Thom Lardiere

**Major Subcontractor:** Mosley & Son, Inc.



# Project Spotlight... continued

project with drainage. The initial drainage phase consisted of in-

stalling 34" x 53" elliptical reinforced concrete pipe along the East Service Road and Jog Road. The direction and sequence of

work was driven by the need to create a significant drainage out-fall to mitigate the on-site dewatering for the project as well as grant Hardrives Paving, Inc. the earliest possible opportunity to access the East Service Road.

Upon completion of the drainage out-fall, Johnson-Davis' next major obstacle was installing the 10" x 3" and 7" x 3" reinforced con-

crete box culverts as well as the mega drainage structure S-49.

## Staging prior to installation of storm water structure.



The box culvert sections were supplied by Mack Concrete through the engineer, CDM Smith, and installed by J-D. S-49 was a poured in place structure 14 ft

x 55 ft with twelve 30" RCP out-falls. Johnson-Davis hired Mosley & Son, Inc. to carry out the concrete forming and pouring of the huge structure which required being poured in sections. J-D assisted with the dewatering and pipe outfalls. The superstructure S-49 was completed in late July 2012.

The J-D team has completed about 90% of the drainage and has currently completed and

tested the roughly 3100 LF of 10" fire main loop that encompasses the project. J-D has also



In progress installation of storm water structure (staging shown far left).

installed a considerable portion of the domestic water, force main, and de-chlorinated water lines to date and looks forward to completing it in the near future. J-D's hard work and progression with the project will continue through 2013.



Overall site view of SWA project. Installation of tipping floor building walls.

## Installation of 7x3 box culvert from S50 to S53.



**Little Club Water System Improvement: Fausto Rodriguez's crew installing valve restraints in lieu of thrust blocks engineered specifically for this project to turn the water on more quickly. When faced with challenges on the jobsite, the J-D Shop came up with alternate modifications that the engineer approved. Then the J-D Shop custom fabricated the restraints for the Town of Jupiter.**





# Kudos Korner

Happy semi-retirement wishes to Tom Winkler! Tom is known for his vast knowledge of all types of construction. He is a



“walking encyclopedia” and knows off the top of his head what most people have to look up.

In addition, Tom is quite innovative and can make things work in ways most people would not have even considered as possibilities.

We are grateful that Tom is only “semi-retiring” and has agreed to assist us from time to time as a consultant.

Congratulations go to the following employees on their promotions:

- Lenny Arce Urieta to Backup Crew Leader

- Clark Cryer to Foreman Trainee
- Egnose Esteime to Pipe-layer
- Juan Carlos Guerrero to Tailman
- Randall Henderson to Tailman
- Alejandro Nava Rivera to Loader Operator
- Bronco Pryor to Foreman Trainee
- Norm Weaver to Superintendent

\*\*\*\*\*  
Good job and thanks to Foreman JJ Williamson and his crew for your work for Greentree Villas Condominium Association. The Association President complimented your professional work!  
\*\*\*\*\*

Due to the hard work of every employee at Johnson-Davis, we

are excited to announce that we have significantly lowered our Experience Modification Rate (EMR).

EMR is a major factor in our workers compensation premiums. This means that we have to pay fewer premium dollars for the same coverage. Also, this gives us an advantage over our competition when bidding and constructing work. Way to go, everyone! All of us deserve to be proud of this accomplishment.

\*\*\*\*\*

For the fourth year in a row, Johnson-Davis was recognized by the Florida Transportation Builders' Association with an Award of Superior Achievement. This was due to our excellent safety record and is another achievement of which we should all be proud!



## In The Press

A feature article in Florida Transportation Builder (Summer 2012), “Tightly Jointed Box Culverts are Foundation of I-595 Repair”, highlighted Johnson-Davis's 12 foot x 6 foot culvert installation for Ranger Construction on I-595 Segment E.



\*\*\*\*\*  
Johnson-Davis was the subject

of numerous articles and photos in the Palm Beach Daily News, spotlighting work of our crews on the Town of Palm Beach Force Main Replacement project.

\*\*\*\*\*  
Johnson-Davis was again ranked on respected magazine Engineering News Record's Top 600 Specialty Contractors



list at #507. We were also again named a top specialty contractor by Engineering News Record, ranked #40 on the ENR list of Southeast Top Specialty Contractors.

\*\*\*\*\*  
Thank you to everyone whose quality work and dedication has led to these opportunities for industry recognition!



## INSURANCE QUESTIONS?

Would you like help comparing your spouse's insurance to that offered at Johnson-Davis? Do you need help finding a doctor near where you live? Do you want explanation on bills you have received or help setting up a payment plan?

You can contact Human Resources. Or, call Jordan Dynamics 24 hours a day 7 days a week for help at 800-832-1018. Spanish-speaking representatives are also available.

## 401K QUESTIONS?

Contact Human Resources. Or, call Principal directly at 800-547-7754 to speak to a representative or work with an interactive phone response system. Access your account at [www.principal.com](http://www.principal.com).

# OPEN ENROLLMENT

## 2013 BENEFITS

We are pleased to report that there will be no changes to our Blue Cross medical plans or Guardian dental or vision plans. There will be no changes to our medical or vision payroll deductions, though dental payroll deductions will increase slightly.



## NO CHANGES?

If you do not want to make any changes to your plans, you do

not need to do anything.

## MAKING BENEFITS CHANGES?

If you have been thinking about making changes, this is the time to do so. You can add or drop dependents. You can switch between plans, and you can add or drop plans.

You must submit paperwork to Human Resources no later than Wednesday, December 26, 2012, if you wish to make a change.

## FUTURE CHANGES

If you do not make changes now, your next chance to do so will be January 1, 2014.

If you experience a qualifying life event such as marriage, divorce, birth, or your spouse loses their coverage, you may be able to make changes mid-year. Contact Human Resources for assistance if this ever happens to you.



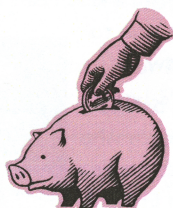
# 401k Retirement Plan

The Johnson-Davis Inc. 401k Plan is a great benefit that helps employees save for retirement. What are the benefits of participating in the Johnson-Davis 401k plan?

- J-D gives you free money as part of the benefit for employees! We match 100% on the first 3% you save and 50% on the next 2% you save.

Example: An employee who earns \$600 in a week puts \$30 in their 401k each week. This employee would also get an extra \$24 from J-D each week for a total of \$54.

In a year, this employee would save \$1,560 and also get \$1,248 extra from J-D for a total of \$2,808!



- Johnson-Davis puts this matching money in your personal 401k account every week. (Other companies may make their employees wait each year until the end of the plan year to get their company matching money.)

- You are immediately vested in the J-D matching money. This means that if/when you leave J-D, you get to take with you all of the matching money that J-D put into your personal account. (Other companies may require their employees to work at that company for quite a few years in order to take all of their match money with them.)

- The amount you save into your 401k lowers your taxable income. Saving in a 401k plan allows you to

(legally!) give less to the government each week while also helping save for your future.

- Savings is convenient because it automatically done through payroll deduction. Sit back and watch your 401k balance grow.

Are you already in the 401k plan and want to increase the amount of your savings? Have you previously decided not to be in our 401k, but now you wish to participate? Do you have any other questions? If so, contact Human Resources for more information.

Save now for a great future!





# Finding In Network Providers

How do you find providers that are in our insurance networks?

## MEDICAL PLANS

Go to [www.bcsfsl.com](http://www.bcsfsl.com)

Towards the middle right, click on "Find a Doctor & More"

This is where you input the information on the doctor. You can also search for providers by zip code.

Insurance plan information:

- If you are on the medical HMO, select "Blue Care"
- If you are on the medical PPO, select "Blue Options"

## DENTAL PLANS

Go to [www.guardiananytime.com](http://www.guardiananytime.com)

Towards the middle right, click on "Find a Provider"

A new window will open

Click "Find a Dentist"

Dental plan information:

- If you are on the dental DMO, select "DHMO/MDG/Pre-Paid" and network "Managed DentalGuard -FL"
- If you are on the dental PPO, select "PPO" and network "DentalGuard Preferred"

This is where you input the information on the dentist. You can also search for providers by zip code.

**WOULD YOU LIKE HELP BY PHONE TO FIND A DOCTOR? Contact Human Resources. Or, call Jordan Dynamics 24 hours a day 7 days a week for help at 800-832-1018. Spanish-speaking representatives are also available.**

## Wellness Wisdom: Stop Tobacco Use

Still thinking about quitting your tobacco use? Did you know that the American Cancer Society reports that tobacco use is the single largest preventable cause of disease and premature death in the US? So quit now!

Quitting is certainly a big challenge. It takes the average person seven to ten quit attempts to quit for good. But there are a lot of resources available, and your loved one or you can beat the odds with help.

Call the Florida Quitline at 877-U-

CAN-NOW or visit [www.floridaquitline.com](http://www.floridaquitline.com), 24 hours a day, 7 days a week, to speak for free with English and Spanish speaking representatives. Florida Quitline representatives will hold coaching sessions, can help you develop your own Quit Plan, and provide some free nicotine replacement aids.

Call 800-227-2345, 24 hours a day, 7 days a week, or visit [www.cancer.org](http://www.cancer.org) to get tips and tools from the American Cancer Society. Many free resources in-

cluding self-help materials are available in several languages. They can also help you find smoking cessation programs near where you live.

Pick your Quit Day, and let your supporters know of your plan. Stock up on oral substitutes including hard candy, sugarless gum, and carrot sticks.

Also, think about your prior quit attempts, and try to figure out what did and did not work for you. Don't be discouraged if you relapse. It is more common than you might think.



## Beneficiary Updates

Have you had a major change in your life such as a marriage, death, or divorce?

If so, you may want to make changes to your beneficiary designations. These are the people you have stated in writing that you want to get your savings and/or benefits when you pass away. The end of the year is a good time to review

your accounts and make sure your beneficiaries are who you want them to be.

You have already submitted in writing to Johnson-Davis who you want to be your beneficiaries for your life insurance and 401k. If you need to make a change or even just think you may need to make a change, please contact Human Resources

for assistance.

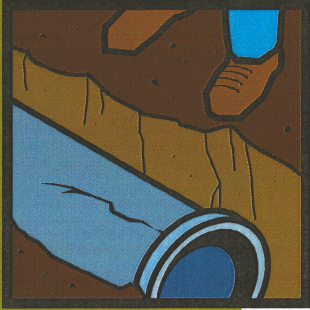
Also remember that you also will have beneficiaries for other savings accounts you may have outside of Johnson-Davis such as an IRA, brokerage account, pension, or 401k with a previous employer.

Now is the time to update those account beneficiaries if your personal situation has changed!





# Safety Musings: Trenching



## SAFETY

**REMINDER: Call 811 before you dig on the job or in your backyard. Did you know that you could be fined up to \$5,000 if a break occurs and you did not call 811 before digging?**

By: Kennie Hatfield

Trenching and excavation work is dangerous. Trenching hazards include exposure to underground power and utility lines, working with heavy equipment, and the general hazards of working in a tight space. But the main hazards of trenching and excavation are cave-ins and wall collapses that result in far too many injuries and deaths.

Cave-ins can be prevented pretty easily with engineering controls, protective equipment, and safe work practices. Still, according to the Centers for Disease Control, about 35 construction workers die in trenching or excavation cave-ins every year. Which brings us to the question: If a trench cave-in occurs on our jobsite, would you know what to do?

If you are near a trench when a cave-in occurs, the first thing you should do is look to see if anyone is in the trench. If there is— or if you think that there might be— **call 911 immediately** to get help. Every second counts....don't delay!

It's human nature to try to help someone whose life is in danger, but you should **never** jump in a trench to try to help a buried person until you make sure it is safe for you to go in. Instead of jumping in, stay close by— but not so close that you cause more dirt to fall in yourself. Talk to the workers who are stuck and help them stay as calm as possible. Tell them that help is on the way.

If you have the knowledge, training, and information you need to start rescue operations, do so carefully. Make the area safe before you enter the trench. Use lumber or plywood to shore up unstable walls and install cross-braces or portable hydraulic shores to protect yourself and others assisting with the rescue. Dig with your hands or carefully with a shovel. Don't use a piece of heavy equipment such as a backhoe. You might dig more quickly, but you may also hit and kill the person you are trying to rescue.

Whether you have the skills to begin helping or you simply keep the victims talking while

help is on the way, be sure that someone goes to the jobsite entrance to lead in the fire department, emergency services, or rescue squad. The person escorting the responders should pass along information about the event and the victims during the trip from the entrance to the cave-in.

A single cubic yard of dirt can weigh more than 3,000 pounds. On rare occasions, a trench cave-in has a happy ending and the victims are rescued. But more often than not, cave-ins crush or suffocate workers within minutes.

Protect yourself from trench cave-ins by refusing to enter an unsafe trench. The best way to prevent cave-ins is by using safe work practices. Always make sure approved protective systems are in place and that the trench is inspected daily by a competent person. Keep spoil piles and equipment at a safe distance away from the excavation. Be sure that safe access and egress from the trench is never more than a few steps away. **SAFETY FIRST!**

## Construction Career Days

Safety Director Kennie Hatfield demonstrates proper tie off procedures as Vergie Bain from OSHA observes.



In October, Johnson-Davis again participated in the South Florida Construction Career Days event sponsored in partnership by the Florida Department of

Transportation and the Florida Transportation Builders Association. This event is designed to introduce high school students to construction careers.

This year J-D partnered with Vergie Bain, US DOL-OSHA Compliance

Assistance Specialist, to also cover workplace safety issues.

Vince Healey, Construction Sales Manager with Honeywell

Safety Products, provided the samples used for demonstrations as well as giveaways for the students.



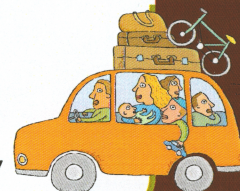


# 2013 Holiday and Vacation Schedule

New Year's Holiday	Tuesday, January 1, 2013
Martin Luther King Day	Monday, January 21, 2013
Memorial Day	Monday, May 27, 2013
Independence Day	Thursday, July 4, 2013
Labor Day	Monday, September 2, 2013
Thanksgiving Holiday	Thursday, November 28, 2013 Friday, November 29, 2013
Christmas Holiday	Wednesday, December 25, 2013
New Year's Day	Wednesday, January 1, 2014

Crew Vacations (10 paid days): Due to when the holidays fall in 2013, field crews will be off:

- Monday, July 1, 2013 through Friday, July 5, 2013. (For these 5 work days off, employees will be paid 1 day of holiday pay plus 4 days of vacation pay.)
- Saturday, December 21, 2013 through Wednesday, January 1, 2014. Employees return to work Thursday, January 2, 2014. (For these 8 work days off, employees will be paid 2 days of holiday pay plus 6 days of vacation pay.)



## Some Current and Upcoming Projects

<u>Job #</u>	<u>Project</u>	<u>Prime Contractor</u>	<u>Owner</u>	<u>Status</u>
40887	SR 710	Ranger Construction Ind Inc.	FDOT	Start Nov 2012
10892	Little Club Water System Improvements	Johnson-Davis Inc.	Town of Jupiter	Start Nov 2012
40895	Turnpike Golden Glades to Hollywood Blvd E8M99	Community Asphalt Corp.	FDOT	Start Jan 2013
40897	South County Service Replacement Phase II	Johnson-Davis Inc.	Palm Beach County Water Utilities	Start Jan 2013
20905	Sarno Lakes Phase II	Johnson-Davis Inc.	Brevard County	Start Nov 2012
20912	Orange Avenue at Canal 56	Johnson-Davis Inc.	St Lucie County	Start Dec 2012



**Town of Palm Beach Sewer/Storm Rehabilitation: Odi Hernandez and crew replaced 8 inch sewer main in an alleyway at Brazilian using only a mini and hand digging due to space constraints (above and right).**



## For the Birds

Odi Hernandez's crew found an injured merlin (a type of small falcon) in one of our containment tanks with oil and fuel on its wings. It must have been injured prior to getting caught in the tank, because it otherwise would never have gotten in there. It was brought to the attention of Superintendent Kerry Jackson who transported the bird to the Wildlife Sanctuary in Ft Lauderdale.







## Johnson-Davis Inc.

### Main Office

604 Hillbrath Drive

Lantana, FL 33462

Phone: (561) 588-1170

Fax: (561) 585-5252

Info@JohnsonDavis.com

www.johnsondavis.com

### Ft Pierce Office

863 South Kings Highway

Ft Pierce, FL 34945

Phone: (772) 468-9200

Fax: (772) 468-9202

## CONSTRUCT WITH CONFIDENCE



**I-595:** Stern Lashley and crew installing another weir control structure as part of the I-595 Express Segment C project for Bergeron Land Development.

**Orange Avenue at Canal 56:** JJ Williamson and crew installing steel sheeting prior to installation of double barrel 60 inch pipe for St Lucie County.



**J-D Shop** outfitting a new **Komatsu 380** loader to meet **J-D** standards.



**SR-112:** Odi Hernandez's crew installing 18 inch RCP in the median for Condotte America. The median was less than 10 feet wide and provided just enough room for a mini to operate. The loader transported each individual piece of pipe to the crew when the crew was ready to install it.



**10th Street in Ft Pierce:** Tom Linsley's crew installing a 6 inch saddle and service pipe on lined 30 inch clay sewer pipe for Dickerson Florida Inc.



**FDOT District 4 Drainage:** Jeff Brady and crew making drainage improvements on Federal Highway in Lake Worth as part of our contract.

Thanks to everyone who contributed to this issue of Pipeline Connection: Joe Bagford, Chescal Ceance, Leonard Dennis, Gene Gardner, Kennie Hatfield, Bob Hopler, Doug Ipolito, Kerry Jackson, Tom Linsley, Edric Martin, Walter Pfaffenberger, Fausto Rodriguez, Brendan Twomey, and Bernie Vito.

Visit our new website:  
[www.johnsondavis.com](http://www.johnsondavis.com)