

## PIPELINE CONNECTION

WINTER 2013/SPRING 2014



## INSIDE THIS ISSUE:

<b>Project News: Mount Dora .....</b>	<b>2-3</b>
<b>Support Crews .....</b>	<b>4-5</b>
<b>Current and Upcoming Projects .....</b>	<b>5</b>
<b>Kudos Korner .....</b>	<b>6</b>
<b>Employee Spotlight .....</b>	<b>6</b>
<b>In the Press .....</b>	<b>6</b>
<b>Bob Spink Retires .....</b>	<b>7</b>
<b>Construction Career Days .....</b>	<b>7</b>
<b>Benefits and Open Enrollment .....</b>	<b>8-9</b>
<b>Safety Scoop .....</b>	<b>10</b>
<b>401k Retirement .....</b>	<b>11</b>
<b>2014 Holiday and Vacation Schedule .....</b>	<b>11</b>
<b>Project Snapshots .....</b>	<b>12</b>

CELEBRATING OUR 36TH  
YEAR OF BUSINESS

## SEASON OF THANKS

It is both my duty and a privilege to deliver my year ending message. 2013 has flown by, and we have successfully completed another year.

Our projects under contract are progressing well, with the number one challenge being the acquisition of new work. We are banking on our area's infrastructure needs to provide contracting opportunities for our talented workforce. I know we can count on our estimating department to meet this challenge.

As the title of my message says, this is the season of thanks. As a company we can be thankful for the work we have, the fine group of owners who provide our contracts, the suppliers that

provide our materials, and the subcontractors that perform our specialty work.

Our management team is quite thankful for the loyalty and hard work of our entire J-D workforce.

As your President, I am thankful that we remain a family business, committed to delivering a quality product, with a dedicated, well-trained workforce, on time and on budget.

May the holiday season bring everyone happiness, and may the new year provide us with rewarding challenges in our business and our personal lives.

Scott Johnson  
President



**Ironhorse Outfall Modification:** Dave Fayssoux's crew including Backhoe Operator Kevin Maag replaced outfall pipe and installed concrete slabs for the Northern Palm Beach County Improvement District.



**SE Heritage Ridge Boulevard:** After Tom Linsley's crew dewatered and excavated a 18 foot cut for J.W. Cheatham and Martin County Engineering, our subcontractor Mosley & Son Construction began work on the footer for a 84 inch headwall.



# PROJECT SPOTLIGHT: MOUNT DORA STREETSCAPES

By: Walter Pfaffenberger,  
Project Manager

It has been our business model at Johnson-Davis to closely control our projects and work for trusted owners in familiar areas. We recently strayed out of our geographic comfort zone to meet the needs of one of our very important customers.

As with any successful business, good customers are hard to find. So, when you have that established relationship it is all about being competitive and providing the best service possible. In this instance, it was about traveling beyond our established geographic zone to meet the needs of our customer.

In the spring of 2013 the City of Mount Dora contracted with Burkhardt Construction for its redevelopment. Burkhardt Construction approached us to com-

plete this assignment. All construction was to be finalized by October 1, 2013. A project of this scope and scale would require much time and energy, but everyone knew that Johnson-Davis was up for the challenge.

Superintendent Leonard Dennis and the Johnson-Davis team got right to work partnering with the Mount Dora Community

redeveloping its streets and sidewalks. In the heart of Central Florida, the one-hundred



Sanitary sewer pipe installation on 3rd Avenue.



Final roadway at 3rd Avenue.

plus year old City of Mount Dora is known for its antique shops, fairs, and picturesque setting on a hill overlooking the shores of beautiful Lake Dora in the Harris Chain of Lakes.

Phase One of the project would revitalize the historic "Downtown" area and enhance this five street radius.

Crews including Foreman



Watermain installation on 5th Avenue, looking west.

Redevelopment Agency. The C.R.A. planned to upgrade drainage, sewer, forcemain, and water systems while beauti-



Looking east at the north side of 5th Avenue after installation.

Where is Mount Dora? Mount Dora is a quaint Central Florida town in Lake County, 27 miles northwest of Orlando. It is a beautiful small town and tourist destination, famous for its antique and specialty shops.



## PROJECT SPOTLIGHT: MOUNT DORA STREETSCAPES (CONTINUED)

Jeff Brady headed up to Mount Dora to begin Phase One of the assignment. Our hardworking coworkers spent the weeks in Mount Dora and returned home to their families on weekends. When necessary, they worked Saturdays as well to keep the project on schedule.

This project was on schedule until torrential rain devastated the downtown area. Little did we know the geographical location, "on the side of a hill" would prove to be the biggest challenge of all...

The summer rains began and did not stop. With the rains came flash floods that would both damage our completed facilities and impact the project schedule.

Pushing us behind, we now had the daunting task of diverting storm water while attempting to complete the new drainage system. In addition, there



Gravity sewer pipe being installed on Alexander Street.

was roughly an 18-20' elevation difference from one end of the job to the other. This extreme elevation difference increased the severity of washouts during heavy downpours.

Our team executed a plan to rectify this situation and got the project back on track. It was not an easy task, but at Johnson-Davis

we never give up.

As with most infrastructure reconstruction projects, there are surprises with every excavator cycle. Mount Dora certainly had its share!

The construction management team of Burkhardt Construction led by Vice President Dennis Haynes, Project Manager Ted Kaminski, and Field Superintendent Christopher Quennville teamed with Johnson-Davis and the City of Mount Dora to

help and the hard work of our mainline crews and support crews, the job would not have been completed by the October 1<sup>st</sup> deadline.

Although far from our normal geographic work area, the project was a success. If the Mount Dora C.R.A. wishes to get Burkhardt Construction involved in future phases, we hope we are a part of that team.



Alexander Street three months later.

solve the countless conflicts and complete the project on time.

A special thank you to Leonard Dennis who literally "camped out" on the site and tackled every problem as it occurred. Without his

### Owner:

City of Mount Dora  
Community  
Redevelopment Agency

### Construction Manager:

Burkhardt Construction

### Project Manager:

Walter Pfaffenberger

### Superintendent:

Leonard Dennis

### Estimator:

Thom Lardiere



## SPOTLIGHT ON SUPPORT CREWS

By: The Johnson-Davis Superintendents

The Johnson-Davis support crews are often our unsung heroes, and they deserve to be recognized for playing such a critical role for our company and help set Johnson-Davis apart from our competition.

Mainline crews appreciate the work that the support crews do,

and superintendents regularly “fight” to get these support employees for their projects during scheduling meetings.

Support crews often arrive on a project after mainline crews have completed the majority of construction. The support crews will put the “finishing touches” on the project and

finalize the job.

A project could have three or four mainline crews, but at the end it is one or two support crews that come in to finish the project.

Our support crews are capable of testing lines, adjusting manholes and inlets, installing utility services, cleaning and televising sanitary sewer and storm drain, and conducting final walk-throughs with all levels of inspectors.



SR 710 Riviera Beach: Lenny Arce Urieta and crew adjust valve boxes for the final lift of asphalt after installation of new watermain for Ranger Construction.



Lakewood Park Canal: Form work to connect to new box culvert being installed by Richard Tharpe and crew for St Lucie County.



I595 Segment E: Tony Estep and Aniel Phanor working on one of the many manhole and barrier wall inlet adjustments for Ranger Construction.

Our crews routinely perform the duties of specialty subcontractors that may be unavailable to adhere



Old Pompano Water and Sewer: Sergio D. Filipone and crew install water and sewer services in an alleyway for Burkhardt Construction.

to the demanding schedule of our high profile projects. Directional moles, cast in place concrete, flat work, and asphalt patching are



I595 Segment C: Dan Follett and Jarrod Roundtree adjust a manhole under lane closure for Bergeron Land Development as the fire suppression line they had worked on earlier was under preliminary pressure test.



## SPOTLIGHT ON SUPPORT CREWS (CONTINUED)



SR5 in Cocoa: Terry Michel and crew install temporary drainage on US1 for Astaldi Construction.

often performed by one of our eight support crews.

In addition, our support crews often accelerate the production of our

mainline crews by performing tie ins, facility abandonments, and all items of restoration, many of which generate revenue.

Our support crews can easily mobilize with required equipment for any size project. Our flexibility and quick response time allows us to be more responsive to our customers.



I595 Segment C: Jerry Davis and Kenny Harp work through extensive drainage system finals for Bergeron Land Development including using airbags for pumping down systems while contending with traffic and other hurdles.

Next time that you see one of our support crew employees, make sure

to say thank you for playing a critical role in support of our team!



I 595 Segment E: Everton Henry and Agustin Guerrero Oseguera handled all construction components for the trench drain installation including saw cutting, excavation, panel installation, and final concrete pour for Ranger Construction.

## SOME CURRENT & UPCOMING PROJECTS

<u>Job #</u>	<u>Project</u>	<u>Prime Contractor</u>	<u>Owner</u>	<u>Status</u>
40979	Sheridan Street T 4344	Ranger Construction Ind.	FDOT	Start Jan 2014
70982	10th Avenue North Watermain Extension	Johnson-Davis Inc.	Palm Beach County Water Utilities District	Start Jan 2014
40998	SR820: 10th Avenue to 9th Avenue	Johnson-Davis Inc.	FDOT	Start Dec 2013
41012	I95: SR512 to Brevard County Line	Community Asphalt Corp.	FDOT	Start Dec 2013
11019	Park Trail Acres	Johnson-Davis Inc.	City of Ft Pierce	Start Jan 2014
61025	Delray Village Shoppes	Mouw Associates Inc.	Ocean Properties	Start Jan 2014



## BOB SPINK RETIRES... AND THIS TIME IT IS REALLY HAPPENING!



After over 36 years with Johnson-Davis Inc., Bob Spink is hanging up his hard-hat for the very last time.

On October 1, 1977, Bob started at Johnson-Davis as our first Foreman. He had previously worked with Herb Johnson in New York at Mr. J's Rocke & Johnson, and they decided to work together again in Florida.

Bob is one of the reasons for the early success of Johnson-Davis.

Over time, Bob became our first Superintendent and Vice President. More recently, Bob has been a Project Manager specializing in major public projects.

Bob is a problem-solver and very attentive. He is easy to get along with, well liked, and develops good rapport with customers.

Bob also has the ability to be tough when it is necessary.

Bob used to be an avid boater, and today he looks forward to having more time to continue golfing. Bob is very serious about having fun!

Best wishes to Bob and his family in his retirement!

## CONSTRUCTION CAREER DAYS

Johnson-Davis Inc. participated in the 12th annual South Florida Construction Career days in October, an event intended to introduce high school and technical school students to careers in construction. The Florida Transportation Builders' Association, Florida Department of Transportation, and the US Department of Transportation Federal Highway Administration sponsor the event.

Over two days, approximately 2,000 students visited 40 labs including hands-on learning labs, career center labs, and hands-on equipment labs.

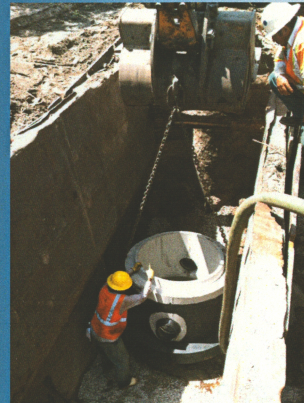
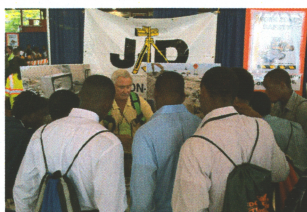
Johnson-Davis again shared a learning lab booth with Vergie Bain, Compliance Assistance Specialist with the U.S. DOL-OSHA. We edu-

cated students on underground utility construction, general safety on the job, and being safe everyday such as managing heat.

Thank you to Vince Healey and Honeywell Safety Products for providing safety gear that the students were able to try on and use.



Vergie Bain (above) and Kennie Hatfield (below), meet with students.



SR-710: Foreman Odi Hernandez observes Pipe-layer Antonio Samuel setting a sewer manhole 15 feet deep for Ranger Construction.



Town of Palm Beach Pinewalk Forcemain: Jerry Philbrick and crew are preparing for a force-main tie-in for the Town of Palm Beach.



## OPEN ENROLLMENT



Johnson-Davis is pleased to offer employees no changes to the design of our medical insurance plans with Blue Cross Blue Shield/Florida Blue, and no changes to the design of our dental, vision, and life insurance plans with Guardian.

### NO CHANGES?

Employees do not need to complete any paperwork unless they wish to make

changes.

### WHAT IF I WANT TO MAKE CHANGES?

If an employee wants to add a benefit, change from one plan to another, add or delete dependents, or make any other similar types of changes, now is the time to do so. Paperwork needs to be submitted to Human Resources in order for your change to be effective Janu-

ary 1, 2014.

If you choose not to make any changes now, your next opportunity to make changes will be in December 2014 to be effective January 1, 2015.

### QUESTIONS?

Contact HR with questions. Or, call our broker's office Jordan Dynamics at 800-832-1018. Jordan Dynamics has representatives who speak English and Spanish.

## BENEFICIARY UPDATE

Have you experienced any major life changes in the past year such as a marriage, divorce, birth, or death in the family?

If so, you should consider updating your beneficiaries with Human Resources. It is very important to do this because your beneficiaries are the people who get your life insurance and 401k benefits if you pass away.

If you have someone named as a beneficiary such as an ex-spouse that you no longer would want to get your money, you must come forward and make that change in writing.

If you would like to change who will get your benefits if you were to pass away, please contact Human Resources as soon as possible. You can make beneficiary changes any time of year, not just at open enrollment.



Town of Palm Beach Ejector Station Upgrade: Chesca Ceance's crew is tying in our newly installed forcemain to a lift station for Murray Logan Construction.

## AFLAC

Would you like information on any AFLAC benefits such as life, disability, or cancer policies to supplement your current health insurance?

Are you currently enrolled in AFLAC benefits and now you would like to make additions, changes, or cancellations?

If so, now is AFLAC open enrollment

and your opportunity to make these additions, changes, or deletions. These additions, changes, or deletions will be effective January 1, 2014, with our annual open enrollment.

Contact Human Resources if you would like information about the AFLAC benefits or would like to make changes to your existing AFLAC benefits.



## WIN \$500! (TWO JOHNSON-DAVIS EMPLOYEES WILL WIN!)

Two Johnson-Davis employees **WILL WIN \$500!**

How do you become eligible for the raffle? It is simple! Be a Johnson-Davis employee, and get an annual physical from your doctor.

Anyone insured through Johnson-Davis can get a wellness annual checkup from their in-network doctor for FREE. (Note: All employees are eligible for the raffle, whether or

not they are on Johnson-Davis insurance.)

Employees are encouraged to get their annual wellness/physical exams during the 12 month period ending September 30, 2014.

After your exam, submit proof of your exam to Human Resources. Do NOT send any of your personal medical information. All we need is a receipt that documents you had

your annual physical between October 1, 2013, and September 30, 2014.

If you have already gotten your annual physical since October 1, 2013, you can request a duplicate receipt from Blue Cross that documents your exam.

All receipts must be to HR no later than October 6, 2014, to be eligible for this raffle.

Our two \$500 winners will be announced to everyone next year, so stay tuned!

If you need help finding doctors near where you live or work or have other related questions, please contact HR for assistance.



## TOBACCO

Have you or a loved one thought about quitting your tobacco use?

You can call the Florida Quitline for help. Call 1-877-U-CAN-NOW (1-877-822-6669) to speak with a Quit Coach. The Coach can help you with many things including creating your own personalized quit plan. This coun-

seling is available in English and Spanish.

You can also get a lot of information including an online program at [www.quitnow.net/florida](http://www.quitnow.net/florida).

Do you think you would be more successful with in-person support? You can find the location of face-to-

face classes at [www.AHECtobacco.com](http://www.AHECtobacco.com). Classes are available in all of Florida's counties. These classes were created by a former smoker.

These resources are available at no cost to you. Free nicotine replacement aids are also available to those who qualify.



## FLU SHOTS DRAWING

Congratulations to Skilled Laborer **Jesus Molina Rios** for winning the 2013 flu shot drawing. As the winner, Jesus received an extra day's pay!

In addition, all Johnson-Davis employees and dependents on our medical insurance

were eligible for free flu shots.

All employees who got flu shots were also given \$10 gift cards from Wal-Mart.



## COMPANY PICNIC

**SAVE THE DATE** for food, fun, family, and friends!

Our next Johnson-Davis family picnic is Saturday, February 8, 2014, at Halpatiokee Park in Stuart. There will be delicious BBQ, entertainment for adults and kids, softball, and awards. More details to follow soon!





# SAFETY SCOOP

By: Kennie Hatfield, Safety Director

## BE ON THE LOOKOUT!

Holidays are a time for relaxing with family and friends. Unfortunately criminals use this time to shift into high gear. Copper and equipment thefts as well as general business/home burglaries typically spike over these long weekends while occupants and property owners are away. Here are a few things to be aware of during this holiday season.

## BURGLARY

Burglary is by far the most common risk to our homes and businesses. According to the FBI, a burglary occurs somewhere in the US every 15.4 seconds. The financial loss can increase due to clean-up and repair costs and gaps in insurance coverage.

Burglaries may seem random, however they are often the result of a selection process.

The following suggestions can minimize your risk by making your home appear less attractive to criminals.

Ensure that all locks for doors, windows, and gates are employed and functioning properly. This is often the first line of defense in protecting your home from unwanted break-ins. Secure all keys, access codes, and don't forget about skylights and other points of rooftop access.

Ensure alarms and lighting are all operating properly.

Maintain adequate levels of illumination for all points of property access, exterior storage areas, and fence lines. The lighting design should address glare that may reduce visibility to security personnel. A proper lighting system should also create a psychological deterrent to intrusion as well as make detection virtually certain in the event an entry is made.

This is the #1 deterrent to criminals.

## THEFT

Unattended property is attractive to criminals during this time of year. Whether for only a few minutes or a few days, your exposure to theft is very real. Electronics, holiday gifts, delivery packages, copper, cash, credit cards, and vehicles are all items of choice by criminals during the holiday season.

## BE ALERT!

Be aware of unusual or strange behavior. If someone seems to be acting suspiciously, or at the first sign of criminal activity, immediately inform local law enforcement.

## TRUST YOUR INSTINCTS!



A1A Highland Beach: Odi Hernandez and crew install a drainage outfall for the FDOT as part of our District 4 annual drainage installation contract.

07-16-2013 09:37



## 401(K) RETIREMENT PLAN: NEW OPTION

Employees can continue to defer into the traditional pre-tax 401k options. In addition, effective January 1, 2014, you can now also choose to defer into the 401k on a post-tax basis into what is called a Roth 401k.

### WHICH SHOULD I CHOOSE?

There is no one right answer for everyone. One way is not necessarily better than the other.

With both, Johnson-Davis will continue the same company match of your deferrals.

With both, the IRS lets you save up to \$17,500 in 2014 (or \$23,000 if you are age 50 or older).

### WHAT ARE SOME DIFFERENCES?

#### TRADITIONAL 401K

- Deferrals come out of your check before taxes so you save on taxes now
- Pay no taxes now, but pay ordinary taxes when you retire
- Because you are not paying

taxes now, every penny from your check is invested

- Financial advisors say this option is typically more attractive if you expect to be in a lower tax bracket at retirement than you are today

#### ROTH 401K

- Deferrals come out of your check after ordinary taxes
- Pay ordinary taxes now, instead of when you retire
- You invest less because you are paying taxes now, but

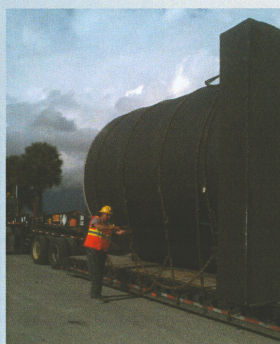
you are not taxed on the growth

- Financial advisors say this option is typically more attractive if you expect to be in a higher tax bracket

### GENERAL INFORMATION

Contact HR if you would like to change to the Roth option. No change will be made to your account unless you notify us.

You may wish to speak with your Tax Advisor prior to making this decision.



Lowboy Driver Tex Miller prepares to haul a lift station from north of Lake Okeechobee to Miami. Here the lift station is laying down on its side: 12' 8" wide, 17' 6" long, 12' tall, and 124,000 pounds. The load is 14' 6" tall from the ground.

## 2014 HOLIDAY & VACATION SCHEDULE

New Year's Holiday	Wednesday, January 1, 2014
Martin Luther King Day	Monday, January 20, 2014
Memorial Day	Monday, May 26, 2014
Independence Day	Friday, July 4, 2014
Labor Day	Monday, September 1, 2014
Thanksgiving Holiday	Thursday, November 27, 2014 Friday, November 28, 2014
Christmas Holiday	Thursday, December 25, 2014
New Year's Day	Thursday, January 1, 2015

Our field vacation schedule for 2014 will be:

A 5-day weekend starting Thursday, July 3, 2014, and returning to work on Tuesday, July 8, 2014 (eligible employees will be paid 1 day of holiday pay and 2 days of vacation pay)



—PLUS—



A little over two full weeks off starting Saturday, December 20, 2014, and returning to work on Monday, January 5, 2015 (eligible employees will be paid 2 days of holiday pay and 8 days of vacation pay)



Village Square: Pipelayer Wisler Dort along with the rest of JJ Williamson's crew finish a water main tie in for CSR Heavy Construction.



I-595 Segment C: Stern Lashley and crew shoring the edge of west-bound 595 prior to installing the deep weir control structure for Bergeron Land Development.

Renaissance Charter School: Watermain and forcemain installation along the Summit Boulevard Bridge for Hardrives of Delray. Tom Winkler, Everton Henry, Terrance Pryor, and their crews installed the pipe and brackets. The J-D shop individually fabricated the aluminum I-beams and pedestals.



## THANK YOU!

Thanks to this issue's contributors: Joe Bagford, Phil Cartales, Leonard Dennis, Gene Gardner, Kennie Hatfield, Bob Hopler, Doug Ipolito, Kerry Jackson, Edric Martin, Walter Pfaffenberger, and Bernie Vito.



Florida Power & Light 24" Pipeline: Subcontracting from Diamond K Construction, a J-D crew led by JJ Williamson prepared a bore pit for Wakefield Road Boring.

Visit our website at  
[www.johnsondavis.com](http://www.johnsondavis.com)

## JOHNSON-DAVIS INC.

MAIN OFFICE  
604 Hillbrath Drive  
Lantana, FL 33462  
(561) 588-1170 phone  
(561) 585-5252 fax  
[info@johnsondavis.com](mailto:info@johnsondavis.com)  
[www.johnsondavis.com](http://www.johnsondavis.com)



FT PIERCE OFFICE  
863 South Kings Highway  
Fort Pierce, FL 34945  
(772) 468-9200 phone  
(772) 468-9202 fax

CELEBRATING OUR 36TH  
YEAR OF BUSINESS

CONSTRUCT WITH CONFIDENCE



Econlock-hatchee Trail: Dave Richards and crew install 30 inch drainage pipe for Hubbard Construction.

Palm Beach Plantation Emergency Control Structures: Tom Linsley and crew installed 42 and 30 inch RCP, water control structures, and headwalls for the Palm Beach Plantation Community Development District.

