

Pipeline Connection

WINTER 2015/SPRING 2016

CONSTRUCT WITH CONFIDENCE

Johnson-Davis Inc.

Our Home is Our Castle



Inside this issue:

Project Spotlight: 1906 S. Ocean Blvd	2-3
Project Spotlight: Flagler Memorial Bridge	4
Construction Career Days	5
Some Current & Upcoming Projects	5
Employee Development	6
Employee Spotlight	7
Benefits	8-9
Kudos Korner	9
Safety Scoop	10
Picnic Save the Date	10
2016 Vacations and Holidays	11
Project Photos	12

You may have noticed the recent addition of two new hydraulic excavators and two new wheel loaders to our fleet. They were added to replace aging units whose cost of repairs were increasing over time.

Two President's Messages in the past two years committed our company to the process of fleet investment, something that

had been put on hold during recent recessionary

times.

In addition to replacing the fleet, we are also in the design and permitting phase of upgrading our Lantana facility. It was originally constructed in

1986 and has since undergone three major additions.

We have decided to invest in the remodeling of our main office. It is our goal to

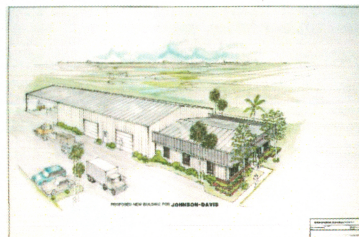
have a more energy-efficient building with work spaces that allow for

a better exchange of information. It will also permit systematic access to plans, specifications, and management tools available to manage and estimate our projects.

The process will be lengthy, cause physical disruption, and costly, but it will also be well worth the investment.

A special thanks to our employees and their families, our customers, suppliers, subcontractors, and friends for another successful year. I wish everyone a happy and safe holiday season.

Scott Johnson
President



Architect's rendering, back from when the (much smaller) Administrative Office shared space with the Shop.



I95 SR 512 to Brevard County Line: David Reid and crew crushed Community Asphalt's existing barrier wall and box culverts that were to be replaced. The material was recycled into bedding stone for the new culverts.

Project Spotlight: 1906 S. Ocean Boulevard

By: Robson Lima, Project Manager

Johnson-Davis was approached by Livingston Builders (LBI) in February 2013 to provide a cost estimate to build an underground pedestrian crosswalk for the future resident of 1906 S. Ocean Blvd (SR A1A in the Town of

Palm Beach). The project's civil engineer, Doug Winter, had knowledge that J-D had previously completed a similar project in Manalapan in 2005 and referred J-D for this project. J-D was enthusiastic and excited for the challenges the project presented.

J-D was awarded the contract in April 2015 to

construct an 8'x8' box culvert, 132 feet long, 16 feet below grade,

completely waterproofed, and crossing S. Ocean Blvd under existing utilities while maintaining two lanes of traffic.

Before construction could begin, careful planning was required. Plans were developed for several areas on the project. There were several J-D brainstorming sessions involving key members of the management team to develop an effective game plan and schedule.

Additionally, a locating company was hired to perform soft digs to locate every utility within the FDOT ROW. Nine utilities were found where the

culvert was to be installed. Their exact elevations had to be determined far in advance to identify any possible conflicts with the tunnel.

The project was divided into two phases. Foreman

Chescal Ceance and crew started the first phase in late September 2015, installing 72 LF of the culvert from west to east on private property. Phase 1 began at the future house connection and ended just west of the FDOT ROW at S.

Ocean Blvd.

Due to the deep excavation, J-D supported the existing S. Ocean Blvd road with 50 wall feet of temporary steel sheet piling running parallel to the road on the west side. The steel sheeting allowed us to

get as close to the FDOT ROW as possible on this phase of the project.

In one day, J-D installed 12 six-foot long pieces of 8'x8' box culverts supplied by Rinker Materials. Next, our subcontractor General Caulking and Coating Co applied the waterproofing material on the outside of

the culvert, and the hole was back-filled. J.W. Cheatham then built 100 LF of temporary bypass road which routed the two existing lanes of S. Ocean Blvd onto the private lot. This work was completed prior to our Phase 2 mobilization.

Construction was limited within the FDOT ROW to the days between the end of turtle nesting season and Thanksgiving. This required us to work 24 hours per day, 7 days per week, to complete within the necessary time frame.

The developer acquired the FDOT permit on November 3. J-D received



its notice to proceed the same day, and J-D mobilized the following day for Phase 2 of the work. J-D was committed and prepared for the work.

The project certainly had its challenges during the around the clock operation.



Installation of culvert under existing utilities.

Following the traffic shift, J-D had to excavate to the bottom of the existing utilities, cut and cap two existing water mains (12" and 8"), cut and cap one existing forcemain (18"), shore the 16 foot deep excavation by installing 60 wall feet of sheet piling, and support a 50-year-old 4 inch steel gas main, several communication conduits, and a 2' x 2' concrete encased FPL duct bank along with an 8'x8'x9' FPL vault.

After excavating and securing the trench, the box culvert was installed underneath all utilities and with only six inches of clearance from the FPL duct bank.

This work was primarily completed by Jeff Brady's crew during the day and

structured.

We faced some challenges. For example, a Comcast fiber optic cable was damaged during our sheet piling operation. The facility was unmarked and even Comcast was unaware of its location and depth. Due to the utility damage, a full work shift was lost while trying to identify and locate the damaged conduit. At the end of the day both ends of the cable were found, and a temporary splice was performed to restore customer service.

One week after the roadway was shifted, J-D crews were already working on backfilling and re-connecting utilities including future water and sewer services to the 1906 property. At the end of the 12th

day of construction, J-D finalized the installation of the final lift of road rock and left it ready for J.W. Cheatham to pave and open the road.

In the end, J-D provided our client with a quality product.

Incredible commitment and dedication was demonstrated at every layer of personnel involved in this project including those involved in planning, those constructing onsite, and key shop personnel. This project proves that J-D can construct any tough project with proper planning, dedication, utilization of resources, ingenuity, and teamwork.

We extend our gratitude to all involved in the project and are proud to stamp the Johnson-Davis name on the 1906 S. Ocean Blvd tunnel project.



Tom Linsley's crew during the night. Dave Fayssoux's crew stepped in for the weekend day shift, and Stern Lashley's crew stepped in for the weekend night shift. Joe Bagford was the primary Superintendent, and Superintendent Edric Martin also assisted with this phase of the project. All involved were committed to transition seamlessly between shifts.

J-D received great cooperation from the City of West Palm Beach and Town of Palm Beach which allowed us to cut and cap the live water and forcemain utilities while the tunnel was being con-



OWNER:

1902-1906 S. OCEAN BLVD LLC

CLIENT:

LIVINGSTON BUILDERS

ENGINEERS:

**DOUG WINTER COMPANIES & THE
SHAFFER GROUP**

SUPERINTENDENTS:

JOE BAGFORD & EDRIC MARTIN

PROJECT MANAGER:

ROB LIMA

ESTIMATOR:

SCOTT JOHNSON

MAJOR SUBCONTRACTORS:

**J.W. CHEATHAM, GENERAL CAULKING
AND COATING CO., MURRAY LOGAN
CONSTRUCTION, UNDERWATER ENGI-
NEERING SERVICES**

MAJOR SUPPLIERS:

RINKER MATERIALS

J-D CREWS:

**JEFF BRADY, CHESCAL CEANCE, DAVE
FAYSSOUX, TOM LINSLEY, & STERN
LASHLEY**

Project Spotlight: Flagler Memorial Bridge

By: Doug Ipolito, Project Manager

In March 2011, the contract with FDOT was finalized and Design Build Plans for construction operations were underway. Johnson-Davis worked with the rest of the design team which included PCL Civil Constructors, Hardrives, Inc., and Wantman Group. In June 2012 RFC Plans were issued, and work was ready to start. PCL and Hardrives began demolition and fill operations.

When PCL started to drive piles for the new bridge, it was discovered that the existing span had begun to settle. This forced operations to cease.

Our initial mobilization was in December of 2013 to set the 36" and 48" RCP outfalls with flap gates while fill and rip rap placement continued out into the Intracoastal Waterway.

Then, at last, in June 2014, J-D began installation of drainage structures and piping on the eastern side of the waterway in Palm Beach. The existing "soil" conditions, mostly coquina,



Chescal Ceance and crew installing 18 inch gravity sewer.



Installation of 30 inch drainage.

required the use of open pump dewatering for a majority of the drainage installation.

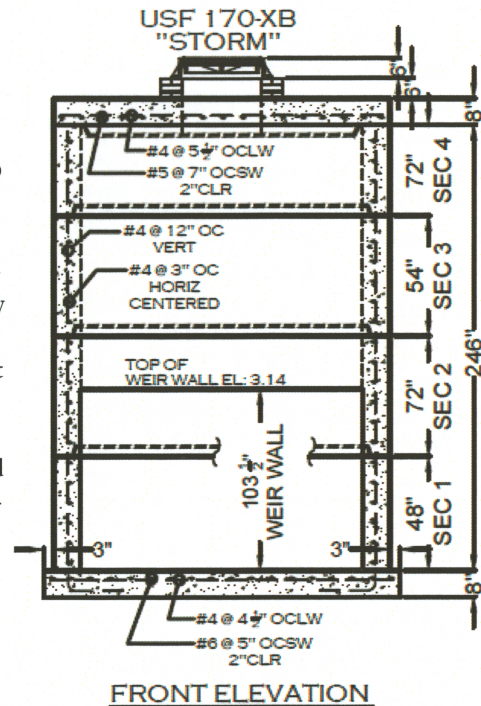
Work in the first phase was completed in November 2014, and J-D did not return again until September 2015. At that time drainage and sanitary sewer installation began west of the Intracoastal Waterway on a closed section of Flagler Drive.

The crew will return to complete work on adding risers to the base of some structures, including the one pictured above, as Hardrives proceeds with backfilling and installing basket walls for the approach to the new bridge.

Work on this phase is ongoing and should be completed sometime in December. Then we will need to demobilize again before we return to set some French drain, 18" gravity sewer, and some interesting drainage with outfalls into the Intracoastal Waterway, and more.

In 2016 we expect to complete both the eastern and western approaches to the new bridge and improvements to Flagler Drive. The most challenging item of work that remains is the drawbridge tender water and sewer service.

More exciting work is to come!



**OWNER:
FDOT**

**DESIGN BUILD TEAM:
PCL CIVIL CONSTRUCTORS, JOHNSON-DAVIS INC., HARDRIVES, INC.,
& WANTMAN GROUP**

**ENGINEER:
AMERICAN ENGINEERING GROUP**

**SUPERINTENDENT:
JOE BAGFORD**

**PROJECT MANAGER:
DOUGLAS IPOLITO**

**ESTIMATOR:
SCOTT JOHNSON**

**MAJOR SUBCONTRACTORS & SUPPLIERS:
HD SUPPLY WATERWORKS, CONCRETE PRODUCTS OF THE PALM BEACHES, & RINKER CONCRETE PIPE**

Construction Career Days

Johnson-Davis Inc. worked with Vergie Bain, OSHA Compliance Assistance Specialist, at the 2015 annual South Florida Construction Career Days event in Broward County.

The two-day event wel-

comed 1,678 students and 143 chaperones and introduced them to careers



in the construction industry. The event is sponsored by the Federal Highway Administration, Florida Transportation Builder's Association, and Florida Department of Transportation.

At the Johnson-Davis Inc./OSHA Compliance workstation, students joined a crew, selected their foreman, and as a group performed a Job Hazard Analysis of assorted construction jobsites.



We would like to thank Efficiency Shoring/Trench Plate Rental Company and Saferite Solutions Inc for providing materials used during the event.

Town of Palm Beach Pump Station E-6: Tom Linsley and crew finish the invert and backfill after Dave Fayssoux and crew installed the sanitary manhole.



Lantana Airport: Rene Hernandez's crew installed 30" drainage for the airplane parking areas. This work was performed for Community Asphalt Co.

Some Current and Upcoming Projects

<u>Job #</u>	<u>Project</u>	<u>Prime Contractor</u>	<u>Owner</u>	<u>Status</u>
41166	SR 70 T 4408	Ranger Construction Industries	FDOT	Start Nov 2015
71173	West Avenue A Water Main Extension	Johnson-Davis Inc.	Palm Beach County Water Utilities Department	Start Jan 2016
31182	Palm Beach Town Square	Burkhardt Construction	Town of Palm Beach	Start Nov 2015
41188	SR 710 T 4418	J.W. Cheatham	FDOT	Start Jan 2016
71195	Aerial Crossing Replacements Priority 1	Johnson-Davis Inc.	Palm Beach County Water Utilities Department	Start Jan 2016

Employee Development

Congratulations to the following employees who have recently completed training:

Asbestos Awareness

- Lenny Arce Urieta
- Jeff Brady
- Chescal Ceance
- Wisler Dort
- Pablo Fernandez Vargas
- Kenny Harp
- Jacky Henrisme
- Everton Henry Sr
- Rene Hernandez
- Jodie Kirk
- Tom Linsley
- Phil McDonald
- Jose L Meza Rodriguez
- Moises Molina
- Peter Newman
- David Reid
- David Richards
- Luis Ruiz
- Antonio Samuel
- Artemus Strachan
- Aristhene Thelisonort
- Mateo Torres Mendez
- Anthony Valverde
- Pedro Valverde

Powered Industrial Truck Training

- Pierre Adolphe
- Abe Cox
- Phil Cupples
- Tony Estep
- Sergio Filipone Sr
- Gene Gardner
- Terry Gayle
- Brian Lewis
- Colville Watson

Reasonable Suspicion Supervisor Training (DOT and DFWP)

- Lenny Arce Urieta
- Joe Bagford
- Phil Cartales
- Chescal Ceance
- Jerry Davis
- Dave Fayssoux
- Pablo Fernandez Vargas
- Sergio D Filipone
- Dan Follett
- Gene Gardner
- Kenneth Harp
- Odi Hernandez
- Kerry Jackson
- Stern Lashley
- Tom Linsley
- Michael Llewellyn
- Kernandy Mitchell
- Jerry Philbrick
- Andy Thomson
- Robert Tomsik
- Norm Weaver

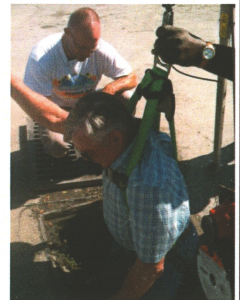
Excavation Competent Person Training

- Lenny Arce Urieta
- Jeff Brady
- Chescal Ceance
- Jerry Davis
- Wisler Dort
- Tony Estep
- Pablo Fernandez Vargas
- Sergio D Filipone
- Dan Follett
- Kenny Harp
- Jacky Henrisme
- Everton Henry Sr
- Rene Hernandez
- Jodie Kirk
- Stern Lashley
- Tom Linsley
- Phil McDonald

- Jose L Meza Rodriguez
- Moises Molina
- Peter Newman
- Jerry Philbrick
- David Reid
- David Richards
- Luis Ruiz
- Antonio Samuel
- Artemus Strachan
- Aristhene Thelisonort
- Mateo Torres Mendez
- Anthony Valverde
- Pedro Valverde

Confined Space Training

- Santos Arce
- Laterrance Banks
- Byron Barrios
- Juan Cabrera Quintero
- Chescal Ceance
- Stevie Daniels
- Willy Dieujuste
- Wislet Dieujuste
- Wisler Dort
- Jose Franco
- Gary Grimsley
- Jacky Henrisme
- Everton Henry Jr
- Everton Henry Sr
- Kerry Jackson
- Jodie Kirk
- Jacky Lormeus
- Edric Martin
- Tommy Pickens
- Famuel Pierre Louis
- David Richards
- Kyle Riegle
- Michael Robinson
- Aristhene Thelisonort
- Assmic Theophilus
- Ernst Turenne
- William Woolridge



During Confined Space Rescue Training, Kerry Jackson and Wilie Woolridge "rescue" Dave Richards from a confined space.

Benefits Open Enrollment

Johnson-Davis is happy to be able to stay with Blue Cross health insurance for another year. In 2016 Johnson-Davis is absorbing 100% of the monthly premium increase for the HMO plan. This means that there is no increase to payroll deductions for employees on the HMO plan. Johnson-Davis is also increasing



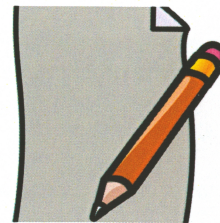
its contribution to the PPO plan by an equal amount.

Johnson-Davis is moving its dental and vision plans to Florida Combined/Blue Vision. Florida Combined/Blue Vision offers similar plans and similar networks.

Please reference your personalized benefits packet for further detail or contact Human Resources with any questions.

Now is the time when employees can

add or drop dependents or add, drop, or change between these plans. Employees can also add, drop, or change AFLAC plans at this time.



Employees wishing to make changes should notify Human Resources in writing no later than Monday, January 4, 2016. If you do not make any changes now, you will not be able to make any additional changes until January 1, 2017.

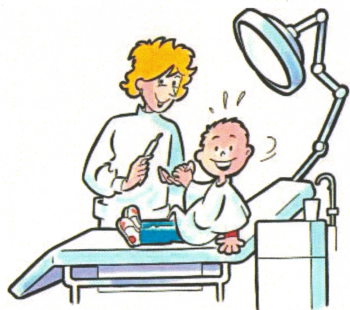
Dental and Vision Insurance Plans & Networks



Effective January 1, Johnson-Davis employees will have dental and vision insurance benefits offered through Florida Combined/Blue Vision.

Employees enrolled in dental or vision plans for 2015 will automatically be enrolled in the Florida Combined/Blue Vision plan comparable to their current plan.

If you would like to be enrolled in a different plan, contact Human Resources no later than Monday, January 4, 2016.



Employees will receive new dental and vision cards in early 2016. For assistance to use the new Florida Combined/Blue Vision plans prior to receiving the new

cards, please contact Human Re-

sources or our insurance agency, Jordan Dynamics, at 561-694-2505.

Employees can find out which providers are in the dental and vision networks by visiting www.bcbsfl.com. The Dental PPO network is "Dental-BlueDental Choice & Choice Plus (PPO)", the Dental DMO network is "BlueDental Care Prepaid", and the Vision network is "Blue Vision".

Employees may also call our insurance agency, Jordan Dynamics, at 561-694-2505, to find in-network providers.

Updating your Beneficiary

Have you recently experienced any major life events such as a marriage, divorce, birth, or death?

If so, it is very important that you update the name(s) of the person you want to get the money in your life



insurance, 401k retirement plan, and other such benefits if you were to pass away. The plans must pay the money to whoever you most recently designated in writing. So, be sure to make any necessary changes right away by contacting Human Resources.

You can make changes to your beneficiary any time of year. Should you experience any major life events in the upcoming year, contact Human Resources right away to ensure the money is given to the person or people that you want to get the money.



Kudos Korner

Congratulations to the following employees on their recent promotions:

- Rene Hernandez to Foreman



- David Keser to Loader Operator
- Eloy Morales to Loader Operator
- Guillermo Ramirez to Pipelayer
- Mainlau Raphael to Tailman
- Luis Ruiz to Tailman
- Robert Shapiro to Skilled Laborer
- Artemus Strachan to Skilled Laborer

401k Retirement Plan

Johnson-Davis Inc. offers a retirement plan to help its employees save for retirement. This is one of the great benefits you are eligible for as employees.

Employees can choose how much they want to save out of their paychecks each week. This means that employees can choose to save a lot each week out of their paychecks, or they can choose to save just a little bit each week.

In addition, Johnson-Davis matches employee savings. Johnson-Davis

matches at 100% of the first 3% you contribute to the plan plus 50% of the next 2% you contribute to the plan.

For example if you earn \$600 each week and save \$30 each week from your paycheck into your 401k, Johnson-Davis will put an extra \$24 each week into your 401k. That means each week a total of \$54 would be added into your retirement account. That adds up quickly!

Generally the savings is deferred from paychecks before taxes, and this also reduces your taxable income each week.

Employees can also elect to have sav-

ings deferred on an after-tax basis into a Roth account. Employees do not save on taxes now, but distributions from Roth contributions are generally tax-free at time of distribution.

Questions? Contact Principal Financial Group directly at 800-547-7754 from 8am to 8pm or call Human Resources for assistance or to answer any questions.

If you are not currently participating and were hired prior to December 31, 2014, then please contact Human Resources if you would like to join the plan.



Flu Shot Raffle Winner

Johnson-Davis employees and dependents participating in our health insurance benefits were able to get flu shots for free.

Employees who provided proof of their flu shots received \$10 gift cards to Target and were also entered into a raffle

for one day's pay!



Russell Divine

We appreciate everyone who got their flu shots and wish for a flu-free winter.

Congratulations to Machinist Russell Divine. Russell won this year's raffle!

Roadway Improvements on NE 3rd Avenue: Stern Lashley and crew installed drainage for Marks Brothers Inc.



Safety Scoop: Training for Success

By: Andy Thomson, Safety Director

As we move into a new year, a new set of challenges, and another season of work, I can't help but look back at what we have done in regard to training over the last year. At this time last year we had begun to complete some much needed training on Competent Person for Excavation, Confined Space, and a few other topics.

As of today, we have substantially completed Competent Person for Excavation and Asbestos Awareness training for every Foreman, Crew Leader, Pipelayer, and Backhoe Operator in the company. Shop employees have undergone shop-specific safety training, and the majority of field employees have been provided Confined Space training.

The next challenge for everyone that has gone through these training classes is to apply what they have learned to what we do. Everyone who has received training has heard the same message at every class – "now that you know the rules, you are responsible to make sure that they are followed on the job"... Our success as crew members and as a company depends on

continually applying these rules.

Following what we have learned in training is easy when you consider that a big part of our success depends on it. This is what separates us from the competition and a large part of what defines our motto: "Construct with Confidence".

Every time we mobilize to a job site and perform work we are in the public eye, and in some places we have numerous spectators.

When we perform as a well-organized, well informed, and professional team, there are no unexpected or unplanned problems that cannot be overcome.

At the end of the work, we will know that we did all that we could in order to be successful – in safety as well as quality of work.

After every job, the list of issues to learn from should become smaller and smaller as time goes by, but it will never disappear completely. The key to everyone going home safely and

producing the highest quality of work rests in committing ourselves to make everything we learned work together. Safety is a part of almost every job site decision we make, including simple things like where to stand, where not to walk, and how to get into and out of a trench.

In every new employee orientation, each new employee is told many times to embrace what they are learning

from each of our more experienced employees and apply it. This is because many of these learnings will have been hard won by them in many cases, even the small things. So you see, in the big picture, future success is all about everything that we have experienced and all that we

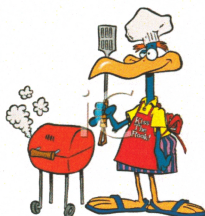
have truly learned. The learning that comes with every failure - as well as our successes - is what makes us all what we are today.

I look forward to another great year with all of you!



Company Picnic

The next Johnson-Davis employee/family picnic will be Saturday, February 20, 2016, at Halpatiokee Park in Stuart. Employees and their immediate families are invited to our annual event...So please save the date!



S-24 Culvert Replacement: Chesca Ceance's crew installed double barrel 54s including the hand-forming of sand cement rip rap walls to allow the widening of 111th Terrace, within the Central Broward Water Control District canal right of way.

2016 Vacations and Holidays

VACATION

Field Employees will have two options for vacation schedules in 2016. Each crew will decide as a group which of these vacation options the entire crew will enjoy.

OPTION 1

July 2 through July 10, 2016, -AND- November 11 through 13, 2016, -AND- December 23, 2016 through January 2, 2017

OPTION 2:

November 11 through 13, 2016, -AND- December 23, 2016 through January 8, 2017

HOLIDAYS

All Johnson-Davis Inc. will be closed to celebrate the following holidays:

New Years Holiday	Friday, January 1, 2016
Martin Luther King Day	Monday, January 18, 2016
Memorial Day	Monday, May 30, 2016
Independence Day	Monday, July 4, 2016
Labor Day	Monday, September 5, 2016
Thanksgiving Holiday	Thursday, November 24, 2016
	Friday, November 25, 2016
Christmas Day	Monday, December 26, 2016
New Years Day	Monday, January 2, 2017



Town of Palm Beach Pump Station D-4: Dave Fayssoux and crew installed a collar around 58x91 pipe that travels from a storm drain pump station into the Intracoastal. The crew also installed riprap rubble rock in front of the pipe.

Johnson-Davis Inc.

Main Office

604 Hillbrath Drive
Lantana, FL 33462
Phone (561) 588-1170
Fax (561) 585-5252
info@johnsondavis.com
www.johnsondavis.com



**THANK YOU TO THIS ISSUE'S
CONTRIBUTORS, ESPECIALLY JOE
BAGFORD, LEONARD DENNIS,
BOB HOPLER, DOUG IPOLITO,
KERRY JACKSON, ROB LIMA, AND
ANDY THOMSON**

Ft. Pierce Office

863 South Kings Highway
Ft. Pierce, FL 34945
Phone (772) 468-9200
Fax (772) 468-9202

CONSTRUCT WITH CONFIDENCE



**Beachland Elementary School
Grading & Drainage Improve-
ments:** Rene Hernandez's crew
including Operator Lorenzo Guer-
rero transport the base sections
of the drainage structures. The
structures were built in place for
the School District of Indian River
County due to limited access to
the interior worksite.



SR 838 T4356 Sunrise Bridge:
(left and below) In its final posi-
tion, 24" watermain installation
for Dragados USA was complicat-
ed for Stern Lashley and crew by
gas main, phone duct bank, and
confinement in a tight work
space.



**Town of Palm
Beach Pump
Station E-6:** Tom Linsley's
crew removed
old 30"
forcemain and
is repiping with
12" forcemain
and an ARV in
an excavation in
coquina with
class "A" soil
stability.



**PBIA Taxiway D&E Rehabilitation/
Reconstruction:** Odi Hernandez's crew
installed a trunkline of 54" RCP across
PBIA's airfield.